

# Three reasons why you should shrink bundle your product instead of putting it into a corrugated box...

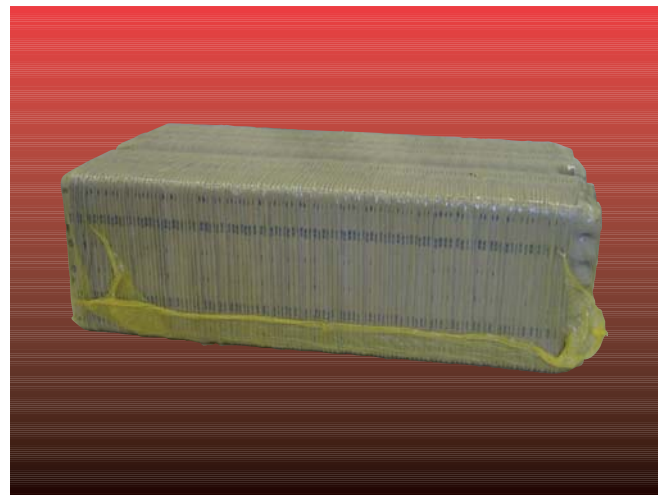
- ① By replacing your corrugated container with shrink polyethylene film, you substantially lower your cost per package.
- ② Products wrapped in shrink film allow you and your customer to visually inspect the product, which is not easily done when it is in a box. And if you don't want people to know what's in the package, you can use colored shrink film.
- ③ Your customer no longer has to dispose of corrugate material – they need only get rid of the shrink film.



Below is a photo of a standard full enclosure style package. Note that we create the side seals by increasing the width of the film roll, letting it shrink to itself in the tunnel, then blowing it up upon itself, and finally we run it through the rollers.

Our systems have the ability to produce either bulls-eye style packages or full enclosure packages.

Below is a photo of a standard bulls-eye style package.



# DAMARK SHRINK PACKAGING SYSTEMS



*The B Series  
Shrink Bundlers & Inline Sleeve Wrappers*



## CONTACT INFORMATION

For more information on our full product line please contact:  
2045 Midland Avenue, Toronto, ON, M1P 3E2

Telephone: 416-609-8011  
Toll Free Line: 800-265-1775  
Fax: 416-298-HEAT (4328)  
Email: [info@damarkpackaging.com](mailto:info@damarkpackaging.com)  
Website: [www.damarkpackaging.com](http://www.damarkpackaging.com)

**PLEXPACK**



Damark Machinery Distributed By:

## B SERIES OF MANUALLY OPERATED SHRINK BUNDLERS

An operator pushes product across a dead plate and through the film. Once the package is in place the operator activates the packaging cycle by pressing two buttons. Top speeds 8 per minute.



### Standard Features:

- Teflon coated sealing head, controlled by a digital PID temperature controller.
- Pneumatically operated upper and lower sealing jaws running on linear bearings.
- Adjustable speed discharge conveyors for speed and product length.
- Heavy-duty welded steel tube construction.

### Options:

Manual Product Pusher. Increased Product Openings.

Available Models	Typical Configurations	Product Currently Run on our Machinery
B24 B34 B44	Stand alone and loose product; pick and pack operations; manually collated items; random product size production runs.	Stacks of books; appliances, electronics, and tools in boxes/trays; bundles of paper and plastic bags; plus most of the products listed in the automatic lists.

Note: the B Series machines are manually operated and as such, almost every type of shrink bundled product can be run on them.

## B-90 SERIES OF RIGHT ANGLE INFEED SHRINK BUNDLERS

Product is fed onto the adjustable speed product infeed conveyor. Once the product enters the product staging area a micro switch or photo sensor activates the pneumatically operated product pusher. A multi-row product pusher indexer is available for multipacks. Top speeds 15 per minute.



### Standard Features:

- Teflon coated sealing head, controlled by a digital PID temperature controller.
- Pneumatically operated upper and lower sealing jaws running on linear bearings.
- Adjustable speed infeed and discharge conveyors for speed and product length.
- Heavy-duty welded steel tube construction.
- Easi-Thread Film System.
- Plexiglass guarding.

### Options:

Print Registration. Package Clamps. Broken Seal Alarm. Increased Product Openings. Low Film Indicator.

Available Models	Typical Configurations	Product Currently Run on our Machinery
B24-90	Unsupported products, products requiring collation.	6 & 12 packs of refreshments (e.g. water & juice), pharmaceutical products, vitamins.
B34-90	Unsupported products, products requiring collation.	24 and up unsupported bundles of refreshments, bundles of paper and plastics bags (e.g. sugar, pet food, flour), boxes (e.g. industrial components, food).
B44-90	Unsupported products, products requiring collation.	Multi packs of boxes and similar items for shipping where the outer corrugate box is being replaced by shrink film; protective packaging with coloured film for shipping through couriers.

Note: 90 degree wrappers can be used on product that doesn't need to be collated when the plant layout dictates an inline layout is not possible.

## B-180 SERIES OF INLINE SLEEVE WRAPPERS

Product is fed onto the adjustable speed infeed. A photo-electric photo sensor senses the product and activates the packaging cycle. Top speeds are 18 per minute and 30 per minute with the HS option.



### Standard Features:

- Teflon coated sealing head, controlled by a digital PID temperature controller.
- Pneumatically operated upper and lower sealing jaws running on linear bearings.
- Adjustable speed infeed and discharge conveyors for speed and product length.
- Siemens or Allen Bradley PLC.
- Heavy-duty welded steel tube construction.
- Easi-Thread Film System.
- Plexiglass guarding.

### HS Option Includes:

Damark Air Infusion Seal Head. Integrated Separation Conveyor. High/Low Speed Anticipator. Dual Roll Film Holder.

### Options:

Print Registration. Product Upstacking. Broken Seal Alarm. Increased Product Openings. Low Film Indicator. Inline Product Pushers.



Available Models	Typical Configurations	Product Currently Run on our Machinery
B24-180	Supported products, stand alone products, and pre-collated bundles.	Trays of cans & bottles, magazines, boxed candy, wine kits.
B34-180	Supported products, stand alone products, and pre-collated bundles.	24 and up trays of water, trays of industrial products, newspapers, appliances, stacks of rubber mats.
B44-180	Supported products, stand alone products, and pre-collated bundles.	Pizza boxes, egg cartons, bundles of gas cans.
B54-180 B64-180 B74-180	Stacks of product, oversized products and pre-collated bundles.	Insulation, knock down furniture, pizza boxes, egg cartons, office partitions.

## RECOMMENDED SHRINK TUNNELS

All of our wrappers have a corresponding, stand alone S Series Shrink Tunnel. For example, the B24 Bundler goes with the S24 Shrink Tunnel.

Models	Zones	Speed Per Minute (based on a 2.5 mil thick film)
S24, S34	SINGLE	6-8
S24T, S34T, S44T	DUAL	14-16
S24T-3, S34-T3	TRIPLE	28-30
S54T-4, S64T-4	DOUBLE/DOUBLE	12-14
S74-T8	DOUBLE/QUAD	10-12

You can view video clips of all of these machines in operation at [www.damarkpackaging.com](http://www.damarkpackaging.com).